

# corralejo -fuerteventura

Located on the northern tip of the island, Corralejo has grown from an old traditional fishing village to a fully fledged holiday resort. A huge range of activities are available from mountain biking and diving to waterparks and crazy golf. The town is buzzing with many bars & restaurants to suit all tastes and budget. With temperatures rarely falling below 20°C, - here please add in celcius sign extremely reliable winter sailing conditions and less than 4 hours flying time, it's a great out of season destination too.

Located on the northern tip of the island, Corralejo has grown from an old traditional fishing village to a fully fledged holiday resort. A huge range of activities are available from mountain biking and diving to waterparks and crazy golf. The town is buzzing with many bars & restaurants to suit all tastes and budget. With temperatures rarely falling below 20°C, extremely reliable winter sailing conditions and less than 4 hours flying time, it's a great out of season destination too.

## Sailing Spot & Conditions

Corralejo has a number of locations to suit every level. The main sailing is the huge, golden sand Flag beach just 10 minutes outside town, set on the edge of the Las Dunas National Park with its constantly moving white dunes. A 400m long bay protected by reefs at both ends, offers flat water on the inside, waves to practice on and good jumping in the right conditions. The straits in between Corralejo and Los Lobos offer long downwind runs. This is a great all round spot with waves in the winter and flat water slalom and freestyle sailing in the summer months.

## Gran Hotel Atlantis Bahia Real & Spa



**Location:** 30 minutes drive from the airport and 10 minutes from Corralejo on small, private beach.



**Accommodation:** A Spanish boutique style, elegant hotel. 170 spacious rooms with sea or pool view. Double rooms with sitting area, mini bar, TV, DVD, safe, ensuite bathroom with bath and balcony. Junior and Atlantico suites are more spacious, some with sofa bed. The Royal Suite has 2 bedrooms, 2 bathrooms, dressing rooms, lounge, dining room, kitchen and large terrace. All with 24 hour room service and internet access.

**Facilities:** Choice of 5 restaurants including Michelin star chef, Italian & Japanese speciality cuisine. Tropical pool (heated in winter), children's pool, Mini Club (4-12yrs), & Beach Club snack bar. Large Spa complex with beauty, health & specialist treatments, incorporating jacuzzi and sauna complex. Well equipped gym with personal trainers and yoga. Lounge and Piano Bar.

**Windsurfing/Kitesurfing:** Approximately 5 -10 minutes drive to Flag Beach windsurf and kite centre. Hotel will liaise with Flag Beach for pickup/drop off for clients.

## Suite-Hotel Atlantis



**Location:** 30 minutes drive from the airport and 5 minutes across the road from a small, sandy beach.

**Accommodation:** Family friendly hotel with 383 comfortably furnished, air conditioned suites. Junior suites have a double bed opening to a lounge with satellite TV, mini fridge, sofa bed, walk-in closet with safe (local charge), ensuite bathroom with bathtub, terrace or balcony. 2 bedroom suites & self catering option with kitchenette available.

**Facilities:** 3 restaurants, 5 pools, tennis courts and games area Internet is available in reception (chargeable). Spa with gym, sauna, massage & beauty treatments. Daily activities (adults & kid's), evening entertainment & disco. Supermarket just outside hotel entrance. Nearby shops/restaurants approximately 10-15mins walk.

**Windsurfing/Kitesurfing:** Flag beach windsurf and kitesurf centre is approximately 5-10 minutes drive from the hotel.



Prices (7 nights) from:	Low	High
Gran Hotel Atlantis Bahia	£849	£1295
Suite-Hotel Atlantis	£559	£899

Price includes return flights, accommodation & car hire.

## Fact File

**Best Time:** May-Sept. Waves Mar/Apr

**Launch:** Wide, sandy beach with access between two reef points.

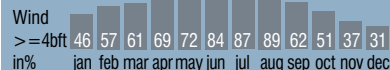
**Wind Direction:** Cross shore from left.

**Wind Type:** Tradewind in summer. Cyclonic winds in winter.

**Shorebreak:** Slight shore break, strong if Sirocco blows.

**Water Conditions:** Slalom & flatwater blasting in summer. Windchop with whitecaps in strong conditions.

**Suitability:** Good Intermediate & above. Beginners catered for at Cotillo.



Air°C	21	21	23	24	25	26	28	29	29	27	24	22
Water°C	19	18	18	18	19	20	21	22	23	23	21	20

## FLAG BEACH

A Fanatic Boarders Centre. 6km+ beach, reef 200m offshore. 10 mins from town based centre. Equipment can be collected here. Shuttle service available. Guided surf tour. Kit Range: 2009/10 Fanatic approx 45-85 boards (low/high season) and 110 North rigs and sails, sizes 4.2-7.0m<sup>2</sup>. Kiddy rigs from 1.5m<sup>2</sup>.

**Board Hire** 1 wk £168 2 wks £255

**Kite Riding Area:** Wide bay with some chop. 3km long strait. Cross to cross offshore Rental: Jaime North & Sumon boards. Kites - North, Takoon & Naish 6.0-12.0m<sup>2</sup>

**Kite Hire** 1 wk £209 2 wks £355

**Instruction:** All levels including Specific eg Gybe, water/board work. Private. IKO BSA Surfing Courses.

**Other Sports:** SUP, Surfing, Diving, Cycling, body boarding safaris, Deep Sea Fishing.

**Excursions:** Glass Beach, 15 mins from Corralejo with an excellent left hand wavebreak. Cotillo approx 25 mins drive on west coast and Marachino. Los Lobos, island of Wolves & Lanzarote day trips.

